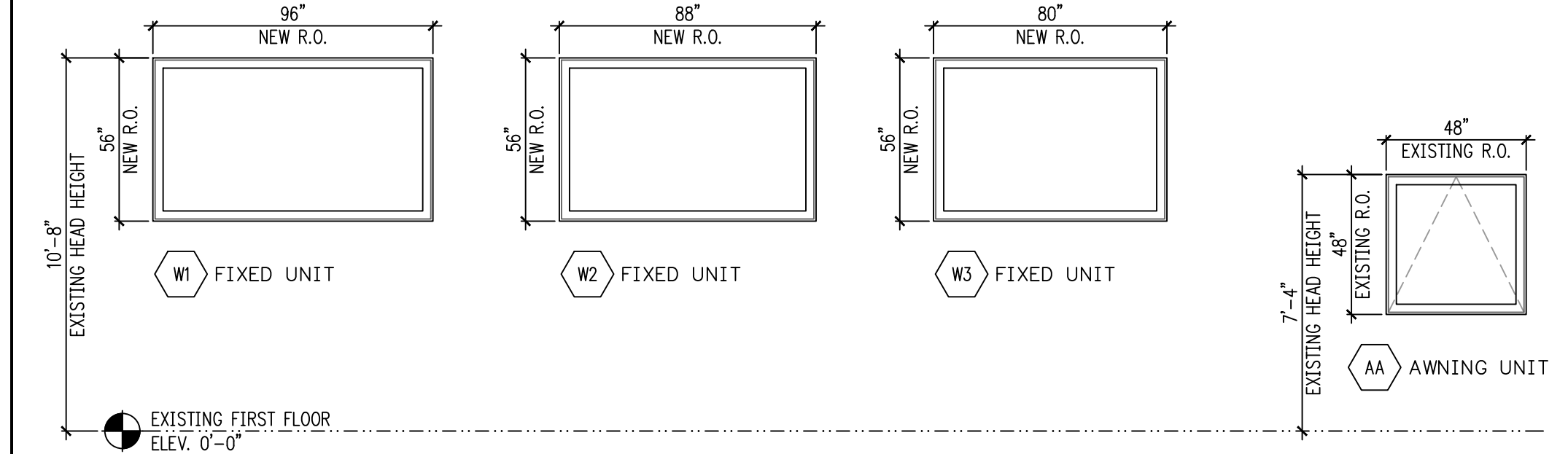


# WINDOW SCHEDULE

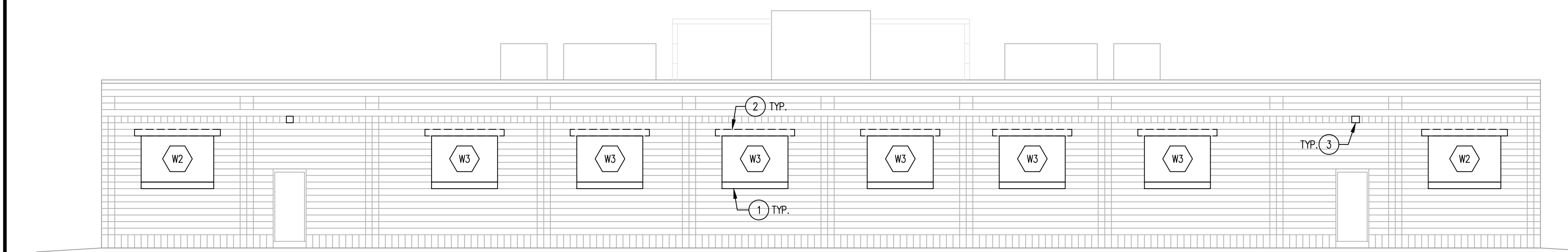


**WINDOW SPECIFICATIONS FOR UNITS "W1, W2, & W3":**  
 MFR: MARVIN  
 TYPE: WOOD WINDOW WITH ALUMINUM CLADDING  
 SERIES: ULTIMATE CLAD FIXED CASEMENT  
 OPERATION: FIXED  
 EXT. COLOR: CASHMERE  
 INT. COLOR: PRIMED WHITE  
 GLAZING: MARVIN GRAY TINTED, LOW-E II

**WINDOW SPECIFICATIONS FOR UNIT "AA":**  
 MFR: MARVIN  
 TYPE: WOOD WINDOW WITH ALUMINUM CLADDING  
 SERIES: ULTIMATE CLAD AWNING  
 OPERATION: AWNING  
 EXT. COLOR: CASHMERE  
 INT. COLOR: PRIMED WHITE  
 GLAZING: MARVIN GRAY TINTED, LOW-E II

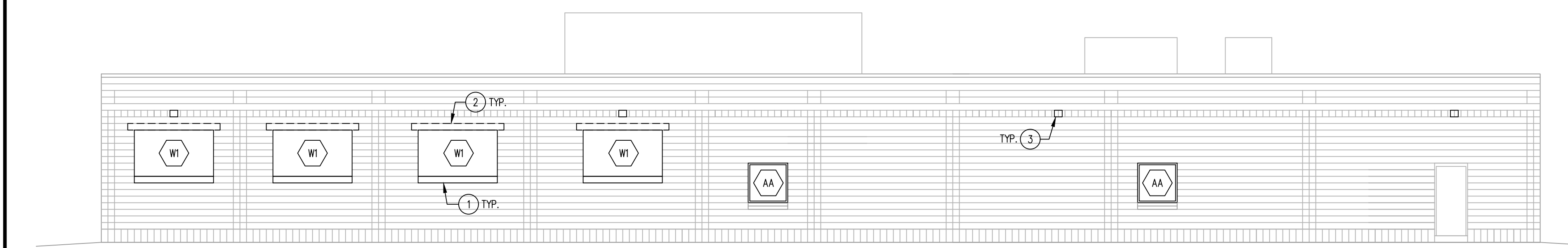
1 NORTH ELEVATION

SCALE: 1/8" = 1'-0"



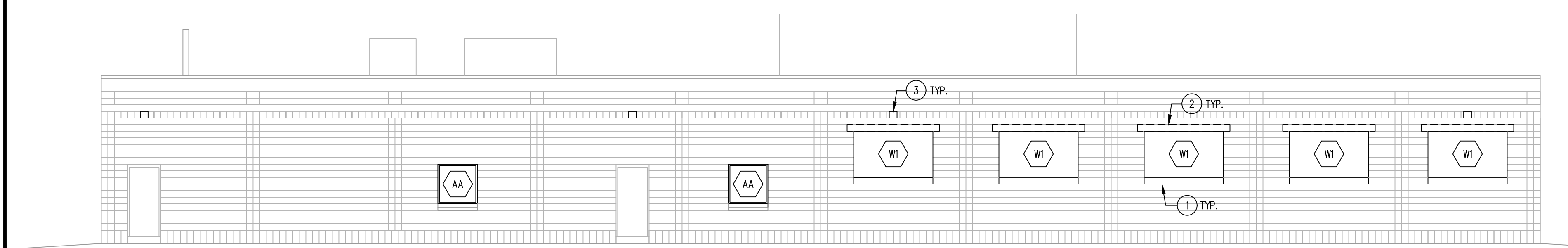
2 SOUTH ELEVATION

SCALE: 1/8" = 1'-0"



3 WEST ELEVATION

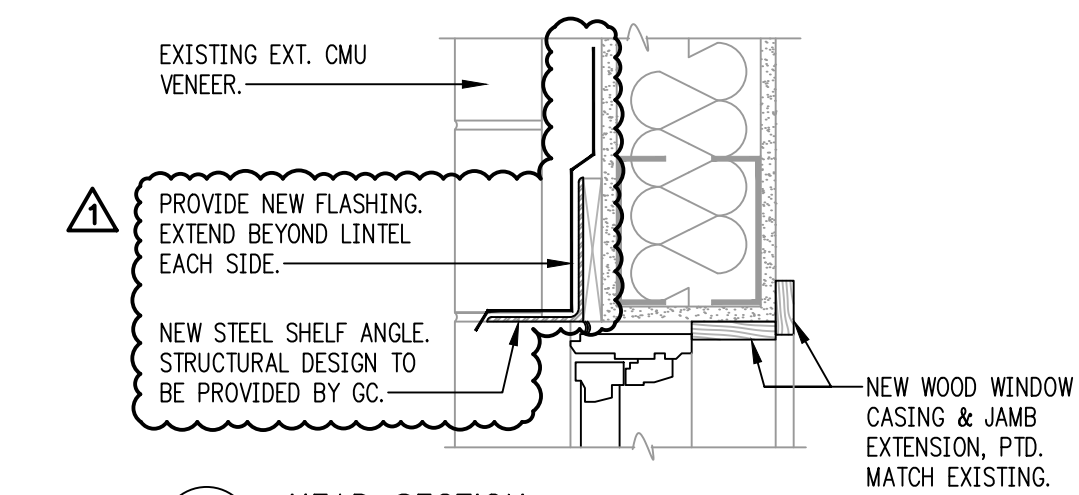
SCALE: 1/8" = 1'-0"



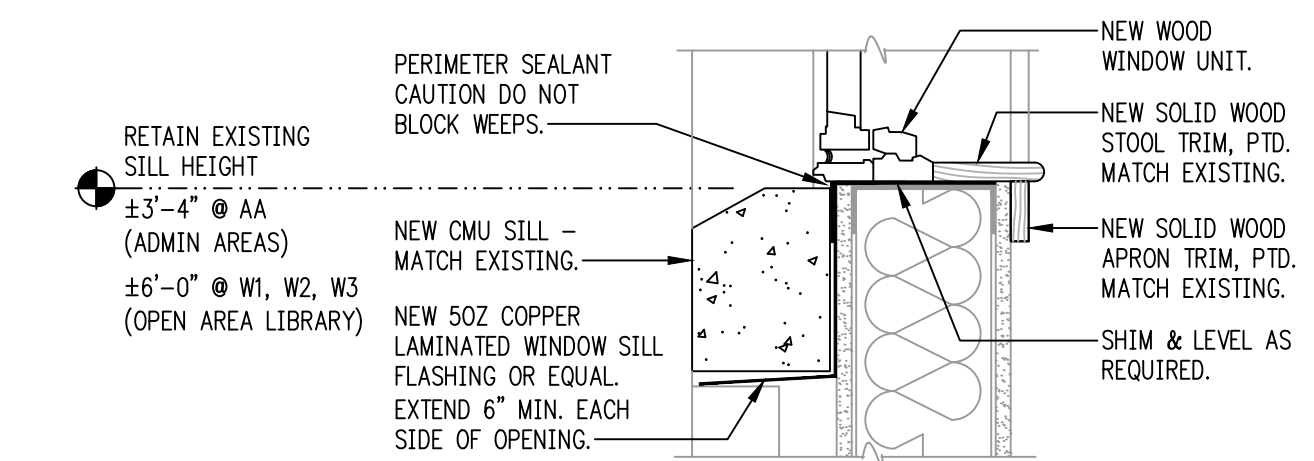
4 EAST ELEVATION

SCALE: 1/8" = 1'-0"

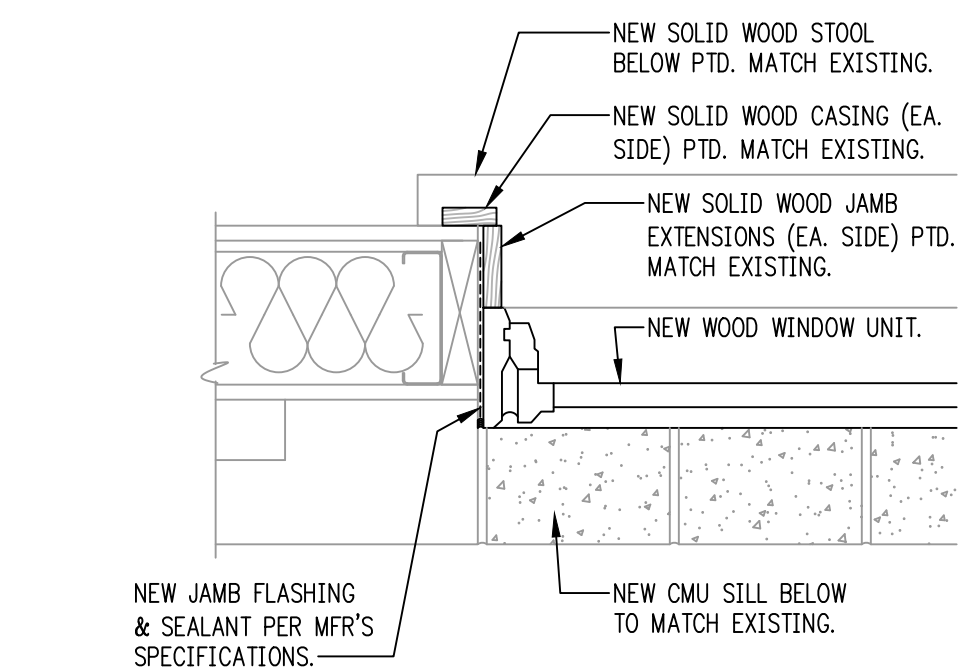
- ELEVATION KEYNOTES:**
- 1 NEW CMU SILL TO MATCH EXISTING.
  - 2 NEW STEEL LINTEL & STRUCTURAL DESIGN BY G.C.
  - 3 RELOCATED WALL PACK LIGHT FIXTURE. G.C. TO RE-WIRE AS REQUIRED.
  - 4 EXISTING CMU SILL @ 'AA' WINDOWS, TYP.



01 HEAD SECTION  
SCALE: 1-1/2"=1'-0"



02 SILL SECTION  
SCALE: 1-1/2"=1'-0"



03 JAMB SECTION  
SCALE: 1-1/2"=1'-0"

5 WINDOW SECTION DETAILS

SCALE: 1-1/2" = 1'-0"

PROPOSED WINDOW REPLACEMENT FOR:  
**LEVITTOWN BRANCH LIBRARY**  
 7311 NEW FALLS RD, LEVITTOWN, PA 19055  
 BRISTOL TOWNSHIP, BUCKS COUNTY

ISSUED FOR BIDDING ONLY  
 NOT FOR CONSTRUCTION

**RHJ ASSOCIATES, P.C.**  
 ARCHITECTS • PLANNERS • DESIGNERS  
 860 1ST AVE, SUITE 9A  
 KING OF PRUSSIA, PA 19406  
 610 337 4855  
 www.rhjassoc.com

BID SET:	04.02.2020
REVISIONS	
ADDITION #	08.20.2020

**A.2**