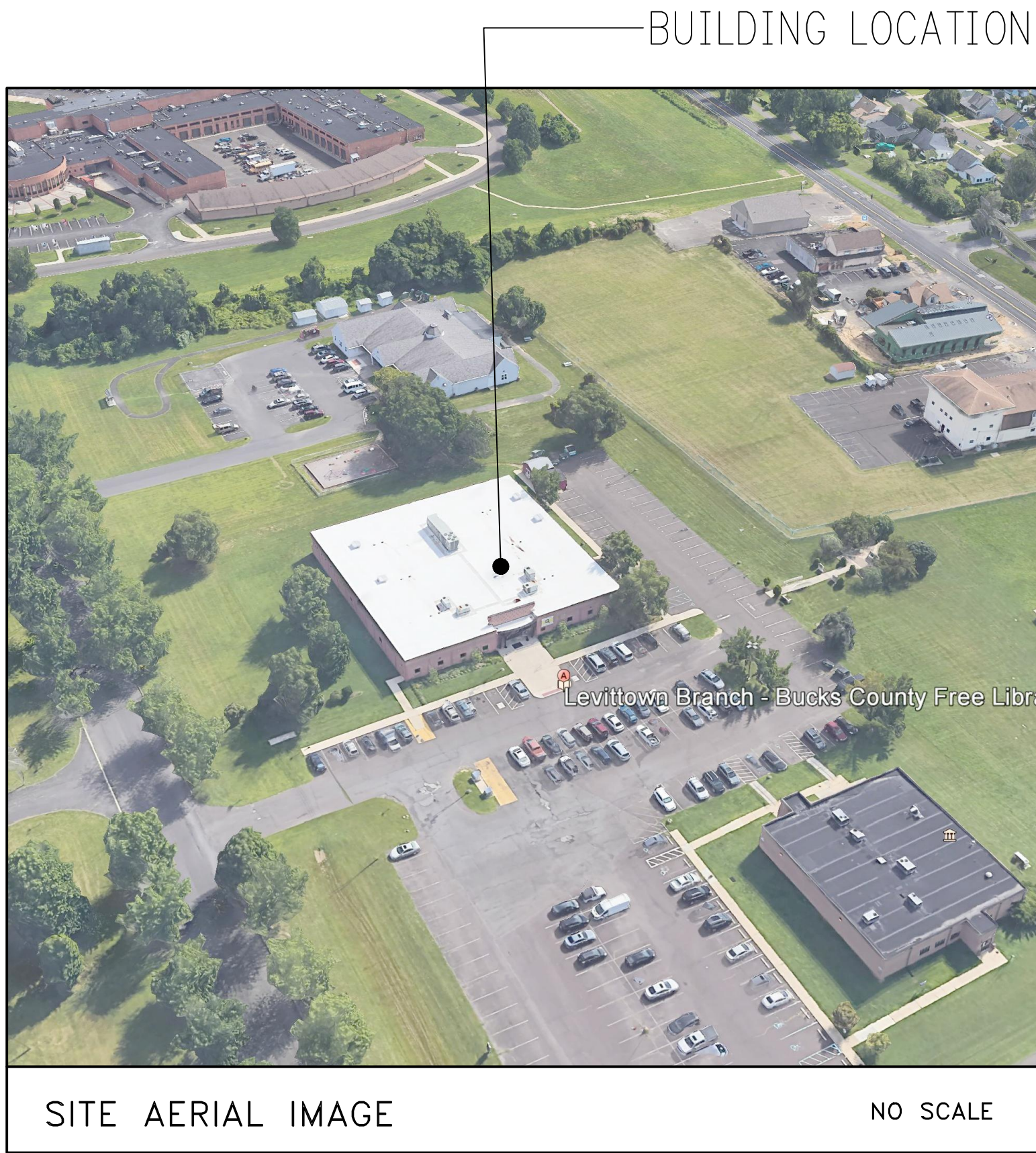
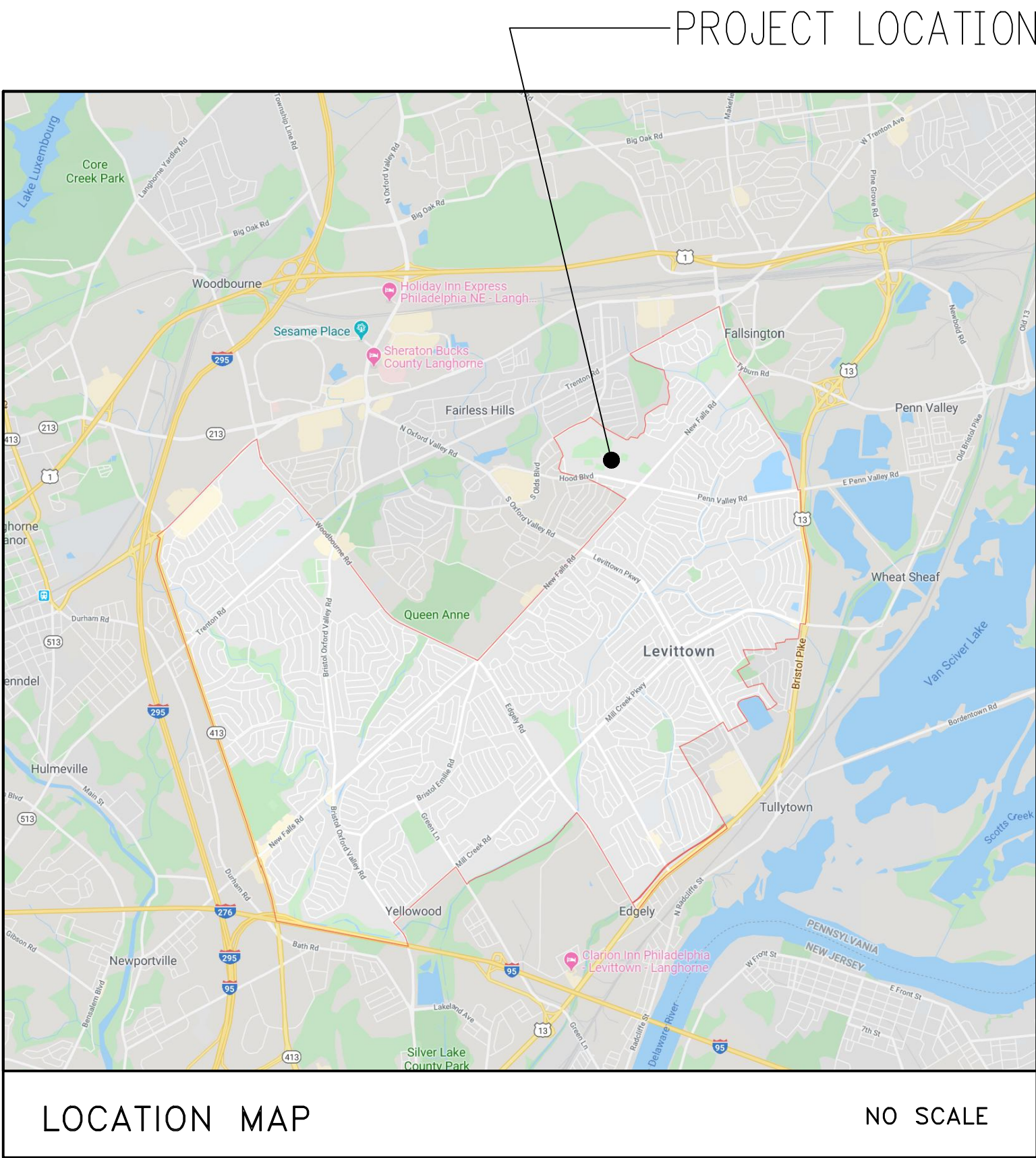


/Users/Jin/Desktop/BCFL_Levittown Branch_Window Replacement_2019-0525/Issued For Bid/BCFL Levittown - PLANS.dwg



BRISTOL TOWNSHIP BUILDING CODES	
PA UCC – ADOPTED CODES	
2015 INTERNATIONAL EXISTING BUILDING CODE (IEBC) – LEVEL 1 ALTERATION	
2015 INTERNATIONAL ENERGY CONSERVATION CODE (IECC)	
2015 INTERNATIONAL FIRE CODE (IFC)	
PROJECT DESCRIPTION:	
TENANT IMPROVEMENT – IEBC LEVEL 1 ALTERATION	
NEWLY DEMISED SUITE FLOOR AREA:	20,000± S.F.
OCCUPANT LOAD:	OFFICE & STACKS AREA: 170 PERSONS (1 PER 100 GROSS S.F.) READING AREA: 60 OCCUPANTS (1 PER 50 NET S.F.) 230 OCCUPANTS TOTAL
USE:	'A-3' ASSEMBLY
EXISTING CONSTRUCTION TYPE:	IIB, NONCOMBUSTIBLE UNPROTECTED
FIRE SUPPRESSION:	EXISTING FULLY SPRINKLERED
HEIGHT:	EXISTING 1-STORY BUILDING
BUILDING CODE SUMMARY	

ARCHITECTURAL

RHJ ASSOCIATES, P.C.

CONTACT: JIM DZIEGRENUK, R.A. 484.393.1604

- CS – COVER SHEET
- D.1 – WINDOW DEMOLITION PLAN
- A.1 – WINDOW LOCATION PLAN
- A.2 – EXTERIOR ELEVATIONS
WINDOW SCHEDULE
WINDOW DETAILS

PROPOSED WINDOW REPLACEMENT FOR:

LEVITTOWN BRANCH LIBRARY

7311 NEW FALLS RD, LEVITTOWN, PA 19055

BRISTOL TOWNSHIP, BUCKS COUNTY

ISSUED FOR BIDDING ONLY

NOT FOR CONSTRUCTION

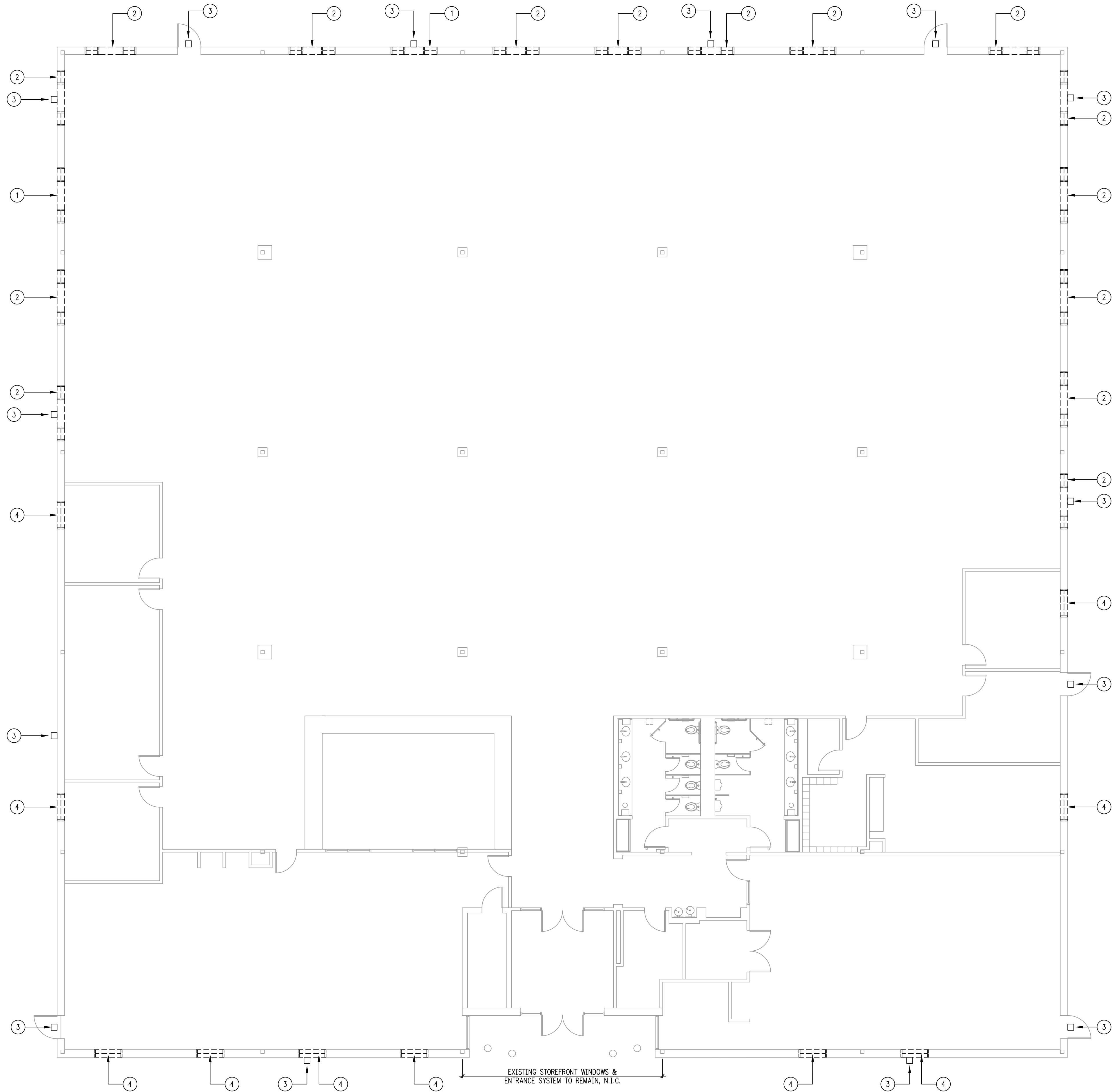
RHJ ASSOCIATES, P.C.
ARCHITECTS • PLANNERS • DESIGNERS

960 1ST AVE, SUITE 9A
KING OF PRUSSIA, PA 19406
610 337 4555
www.rhjasoc.com

BID SET: 04.02.2020	
REVISIONS	

CS

/Users/Jin/Desktop/BCFL_Levittown Branch_Window Replacement_2019-0525/Issued for Bid/BCFL Levittown - PLANS.dwg



- DEMOLITION PLAN KEYNOTES:**
- DEMOLISH (2) WINDOWS & MASONRY IN-BETWEEN TO CREATE NEW 96"W. X 64"H MASONRY OPENING. SALVAGE CMU REMOVE FROM ROUGH OPENING FOR PATCHING WHERE REQUIRED. EXISTING WINDOW HEAD HEIGHT TO REMAIN AT EXISTING HEIGHT A.F.F.
 - G.C. TO SUPPLY & INSTALL NEW STEEL LINTEL ABOVE. G.C. TO SUPPLY STRUCTURE DESIGN AS REQUIRED.
 - REMOVE EXISTING EXTERIOR LIGHT PACK & SAVE FOR RELOCATION. PATCH EXISTING CMU WITH CMU REMOVED AT NEW WINDOW ROUGH OPENING LOCATIONS.
 - ADD ALT. OPTION - DEMOLISH EXISTING WINDOW. PREP EXISTING MASONRY OPENING FOR NEW WINDOW INSTALLATION AS REQUIRED.

- PROJECT DEMOLITION NOTES:**
- REMOVE ALL EXISTING INTERIOR STOODS, GWB JAMBS & HEADERS, AND EXTERIOR CMU SILL UNITS.
 - REMOVE ALL EXISTING FLASHING & SEALANT AT ALL DEMOLISHED WINDOW OPENINGS. PREP OPENING AS REQUIRED FOR NEW WINDOW INSTALLATIONS.

- GENERAL DEMOLITION NOTES:**
- ALL EXISTING SURFACES DAMAGED AS A RESULT OF DEMOLITION SHALL BE PATCHED AND REPAIRED TO ACHIEVE A SMOOTH SURFACE FOR FINISH INSTALLATION.
 - IT SHALL BE THE RESPONSIBILITY OF THE CONTRACTOR TO TAKE ALL NECESSARY PRECAUTIONS TO INSURE THE SAFETY OF ALL EXISTING ELEMENTS DURING ALL PHASES OF WORK.
 - FOLLOW ALL APPLICABLE FEDERAL, OSHA, STATE AND LOCAL REGULATIONS.
 - CONTRACTOR TO COORDINATE WITH BUILDING OWNER THE DUMPSTER LOCATION ON SITE. ALL DEMOLITION DEBRIS NOT BEING RELOCATED IS TO BE REMOVED FROM THE SITE ON A DAILY BASIS.

- WALL & SYMBOL LEGEND:**
- EXISTING WALL TO REMAIN.
 - EXISTING WINDOW TO REMAIN.
 - EXISTING DOOR & FRAME TO REMAIN.
 - REMOVE EXISTING STEEL-FRAMED WALL W. CMU VENEER.
 - DEMOLISH EXISTING WINDOW.

1 WINDOW DEMOLITION PLAN

SCALE: 1/8" = 1'-0"

PROPOSED WINDOW REPLACEMENT FOR:
LEVITTOWN BRANCH LIBRARY
7311 NEW FALLS RD, LEVITTOWN, PA 19055
BRISTOL TOWNSHIP, BUCKS COUNTY

ISSUED FOR BIDDING ONLY
NOT FOR CONSTRUCTION

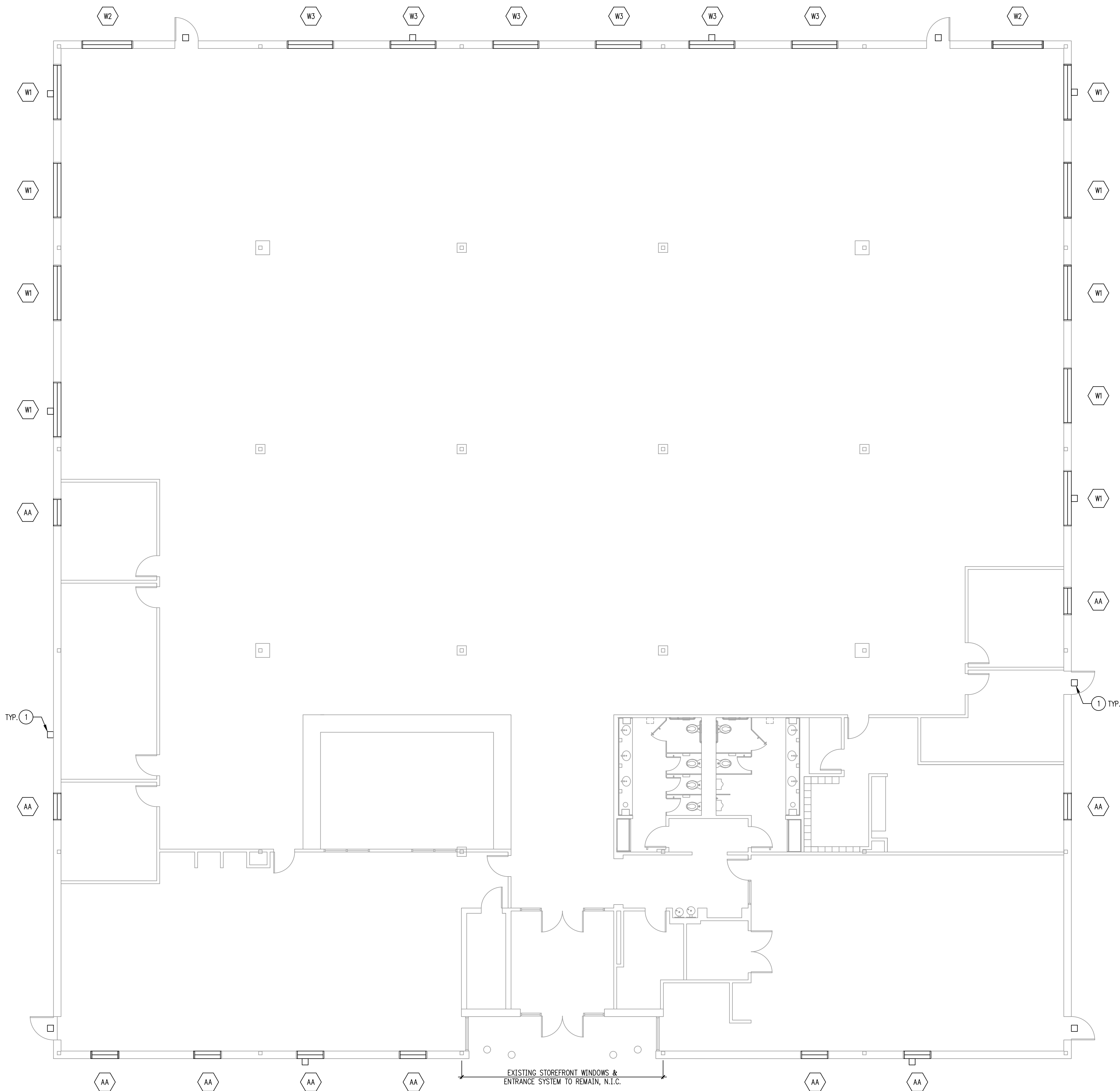
RHJ ASSOCIATES, P.C.
ARCHITECTS • PLANNERS • DESIGNERS
960 1ST AVE, SUITE 9A
KING OF PRUSSIA, PA 19406
610 337 4655
www.rhjasoc.com

BID SET:	04.02.2020
REVISIONS	

D.1

2019-0525

/Users/jm/Desktop/BCFL_Levittown Branch_Window Replacement_2019-0525/Issued for Bid/BCFL Levittown - PLANS.dwg



FLOOR PLAN KEYNOTES:

1 RE-MOUNT EXISTING EXTERIOR LIGHT PACK TO ABOVE WINDOW HEADER - SEE EXTERIOR ELEVATIONS, TYPICAL.

ADD ALTERNATE NOTES:

BASE BID: EXISTING WINDOWS AT AA LOCATIONS TO REMAIN AS IS.

ADD ALTERNATE #1: DEMOLISH EXISTING AWNING WINDOWS & REPLACE WITH NEW AS SHOWN IN WINDOW SCHEDULE.

PROJECT NOTES:

1. PATCH, REPAIR, OR INSTALL NEW GMB JAMBS & HEADERS AT ALL NEWLY ENLARGED WINDOW LOCATIONS AS REQUIRED. PAINT - MATCH EXISTING.

2. INSTALL NEW STOOLS & OTHER INTERIOR TRIM AT ALL NEWLY ENLARGED WINDOW OPENINGS AS REQUIRED. MATCH EXISTING PROFILE & FINISH.

3. INSTALL NEW EXTERIOR CMU SILL UNITS AT ALL W1, W2, W3 WINDOW LOCATIONS. MATCH EXISTING CMU SILL UNITS.

4. EXISTING EXTERIOR CMU SILL UNITS AT AA WINDOW LOCATIONS TO REMAIN.

5. PAINT NEW STEEL LINTELS IF EXPOSED.

6. INSTALL NEW FLASHING & SEALANT AS REQUIRED BY MANUFACTURER'S SPECIFICATIONS.

WALL & SYMBOL LEGEND:

EXISTING WALL.

EXISTING DOOR & FRAME TO REMAIN.

NEW WINDOW.

WINDOW IDENTIFICATION TAG - SEE WINDOW SCHEDULE.

1 WINDOW LOCATION PLAN

SCALE: 1/8" = 1'-0"

PROPOSED WINDOW REPLACEMENT FOR:
LEVITTOWN BRANCH LIBRARY
7311 NEW FALLS RD, LEVITTOWN, PA 19055
BRISTOL TOWNSHIP, BUCKS COUNTY

ISSUED FOR BIDDING ONLY
NOT FOR CONSTRUCTION

RHJ ASSOCIATES, P.C.
ARCHITECTS • PLANNERS • DESIGNERS
960 1ST AVE, SUITE 9A
KING OF PRUSSIA, PA 19406
610 337 4655
www.rhjasoc.com

BID SET:	04.02.2020
REVISIONS	

A.1

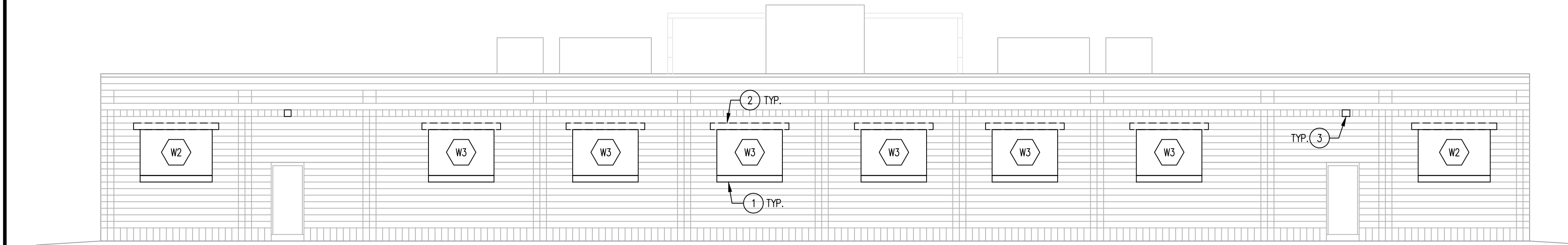
2019-0525

/Users/jm/Desktop/BCFL_Levittown Branch_Window Replacement_2019-0525/Issued for Bio/BCFL Levittown - PLANS.dwg



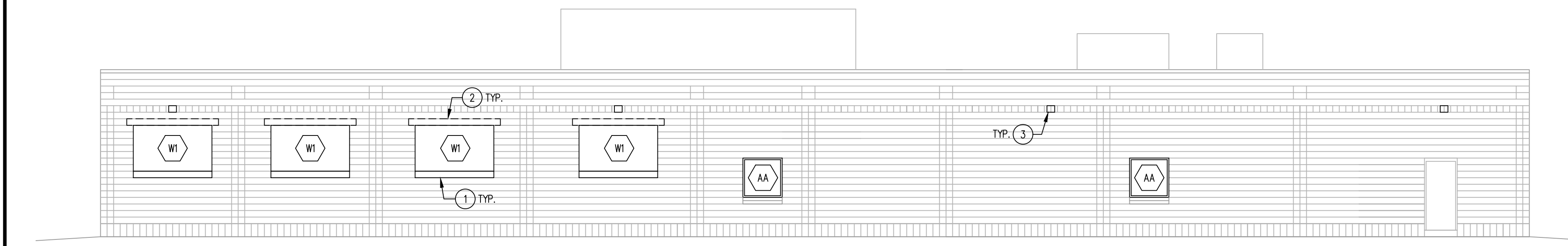
1 NORTH ELEVATION

SCALE: 1/8" = 1'-0"



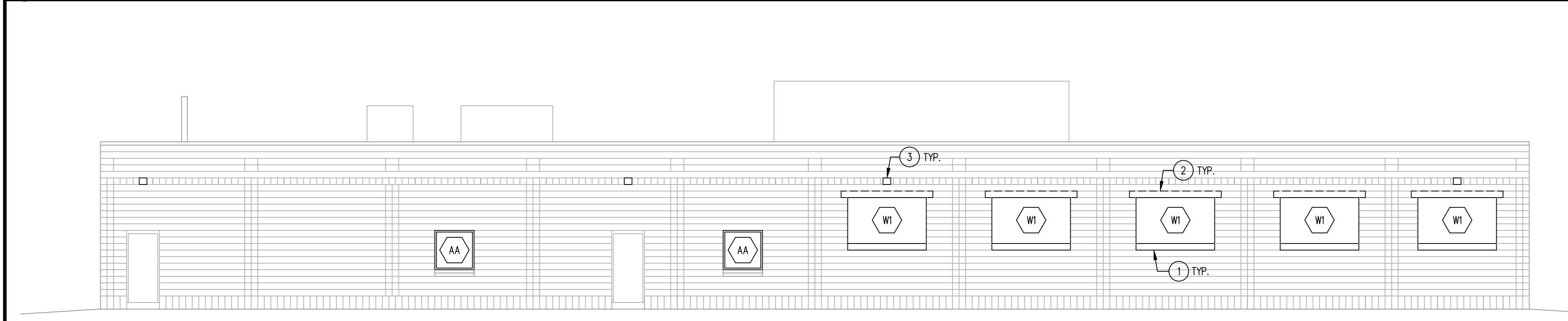
2 SOUTH ELEVATION

SCALE: 1/8" = 1'-0"



3 WEST ELEVATION

SCALE: 1/8" = 1'-0"

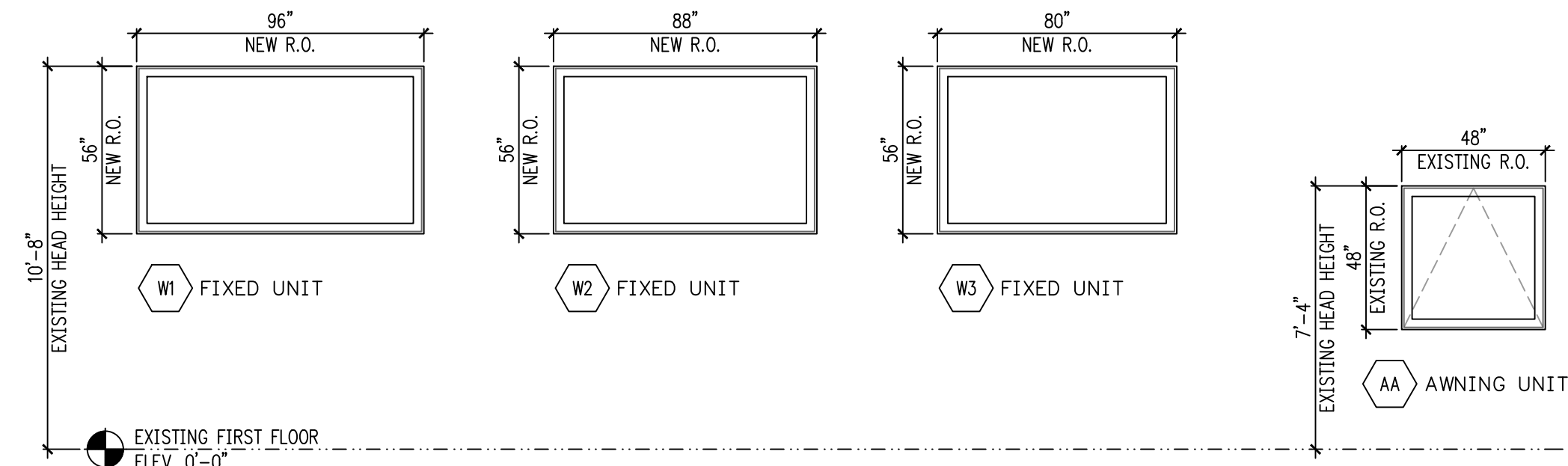


4 EAST ELEVATION

SCALE: 1/8" = 1'-0"

- ELEVATION KEYNOTES:
- 1 NEW CMU SILL TO MATCH EXISTING.
 - 2 NEW STEEL LINTEL & STRUCTURAL DESIGN BY G.C.
 - 3 RELOCATED WALL PACK LIGHT FIXTURE. G.C. TO RE-WIRE AS REQUIRED.
 - 4 EXISTING CMU SILL @ 'AA' WINDOWS, TYP.

WINDOW SCHEDULE

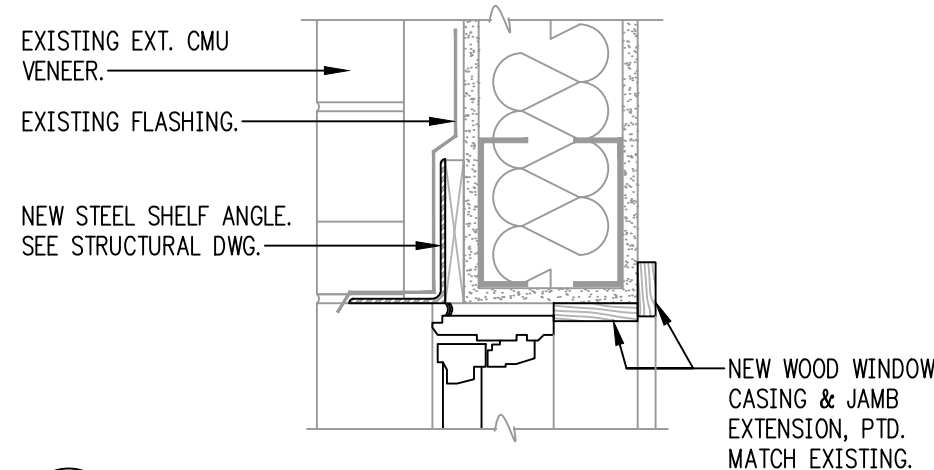


WINDOW SPECIFICATIONS FOR UNITS "W1, W2, & W3":

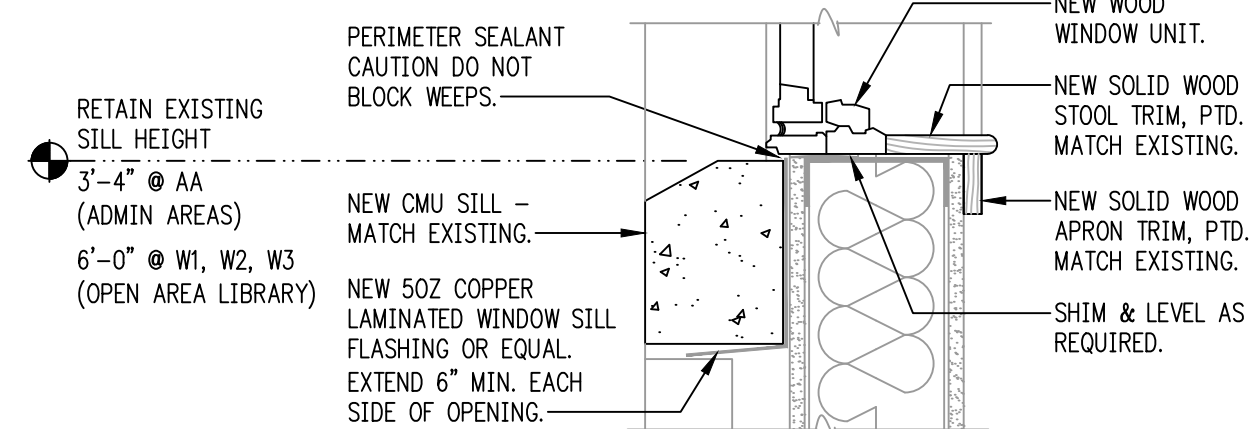
MFR: MARVIN
TYPE: WOOD WINDOW WITH ALUMINUM CLADDING
SERIES: ULTIMATE CLAD FIXED CASEMENT
OPERATION: FIXED
EXT. COLOR: CASHMERE
INT. COLOR: PRIMED WHITE
GLAZING: MARVIN GRAY TINTED, LOW-E II

WINDOW SPECIFICATIONS FOR UNIT "AA":

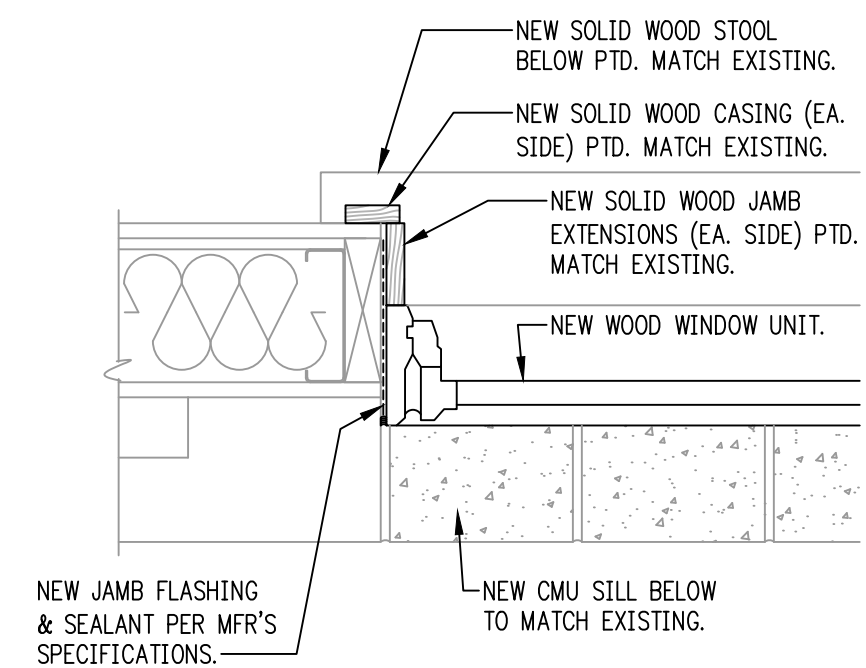
MFR: MARVIN
TYPE: WOOD WINDOW WITH ALUMINUM CLADDING
SERIES: ULTIMATE CLAD AWNING
OPERATION: AWNING
EXT. COLOR: CASHMERE
INT. COLOR: PRIMED WHITE
GLAZING: MARVIN GRAY TINTED, LOW-E II



01 HEAD SECTION
SCALE: 1-1/2"=1'-0"



02 SILL SECTION
SCALE: 1-1/2"=1'-0"



03 JAMB SECTION
SCALE: 1-1/2"=1'-0"

5 WINDOW SECTION DETAILS

SCALE: 1-1/2" = 1'-0"

PROPOSED WINDOW REPLACEMENT FOR:
LEVITTOWN BRANCH LIBRARY

7311 NEW FALLS RD, LEVITTOWN, PA 19055
BRISTOL TOWNSHIP, BUCKS COUNTY

ISSUED FOR BIDDING ONLY
NOT FOR CONSTRUCTION

RHJ ASSOCIATES, P.C.
ARCHITECTS • PLANNERS • DESIGNERS

960 1ST AVE, SUITE 9A
KING OF PRUSSIA, PA 19406
610 337 4655
www.rhjasoc.com

BID SET: 04.02.2020

REVISIONS

A.2

2019-0525