

Spooky Swab Skeleton

Skeletons have always been used as symbols for death. People dress up as them, use them to decorate their homes, and they are always in scary movies.

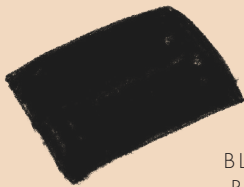
But did you know that skeletons are used all around the world to help people remember about loved ones who are no longer with them?

Get ready for some spine tingling fun, and make your own skeleton!

MATERIALS



COTTON
SWABS



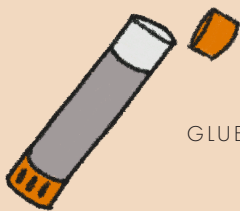
BLACK
PAPER



WHITE
PAPER



SCISSORS



GLUE STICK



BLACK
MARKER

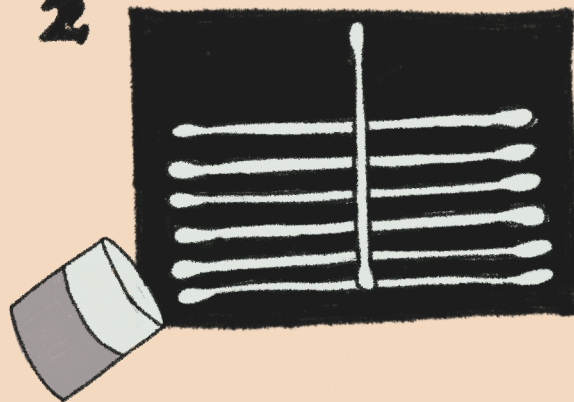
INSTRUCTIONS

1



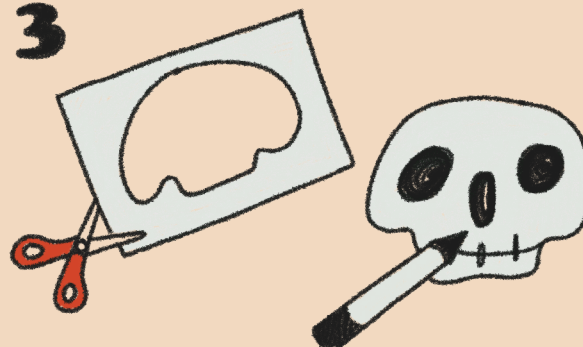
Begin gluing 6 cotton swabs on the black cardstock in order to make the skeleton's ribs.

2



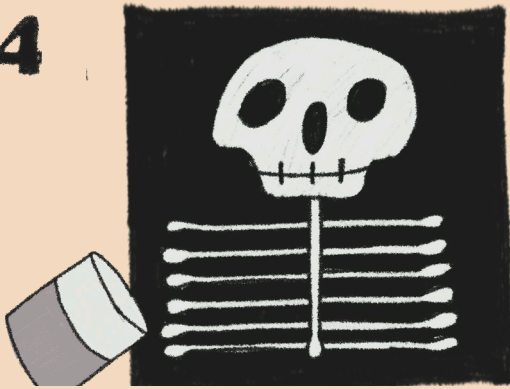
Glue 1 cotton swab perpendicular over the ribs to make the backbone. Make sure to line up the bottom of the cotton swab with the last rib to make sure that the skeleton will have a neck.

3



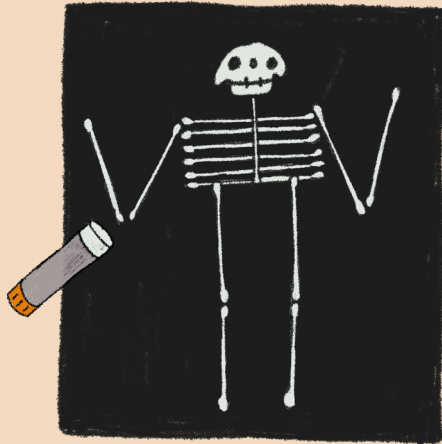
Draw a skull on the white paper with the black marker, and then cut it out.

4



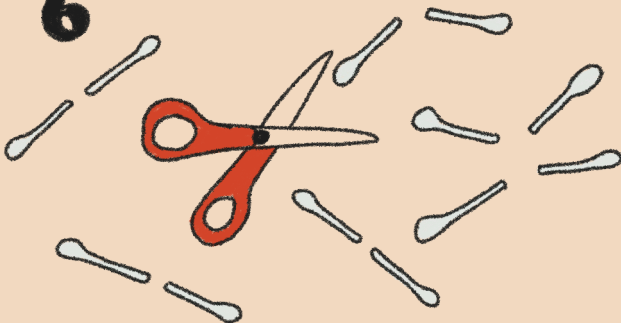
Glue the skull on the paper.
Make sure it is connected to
the top of the neck bone!

5



Glue 8 cotton swabs for the
arm and leg joints [2 cotton
swabs for each arm and leg].

6



Cut 6 cotton swabs in half.
These will make the 10 fingers
and 2 feet.

7



Glue them in place, and put
your skeleton on display!

FAST FACT

The adult human skeleton
has 206 bones, 54 of
which are located in
the hand.

KEEP IT GOING!

**Experiment by
drawing different
emotions on the
skeletons face, and
by changing its arm
and leg positions.**

**Take this craft to the
next level by gluing
cotton swabs
together to make a
skeleton sculpture.**