

TOWNSHIP LOCATION MAP NO SCALE



EXISTING SITE PLAN NO SCALE

PROPOSED EXTERIOR STOREFRONT REPLACEMENTS FOR:
BUCKS COUNTY FREE LIBRARY

BENSALEM BRANCH

3700 HULMEVILLE ROAD, BENSALEM, BENSALEM TOWNSHIP, PA 19020

— ARCHITECTURAL SHEETS —

RHJ ASSOCIATES, P.C.
 CONTACT: MICHAEL HENRETTY, 302.528.4406
 A.0 – COVER SHEET – MAP / SITE PLAN / SHEET ENUMERATION / CODE REVIEW
 A.1 – WINDOW LOCATION PLAN
 A.2 – DOOR SCHEDULE & HARDWARE SPECIFICATIONS / WINDOW SCHEDULE & SPECIFICATIONS

— BUILDING CODE REVIEW —

BENSALEM TOWNSHIP BUILDING CODES
 PA UCC – ADOPTED

2009 INTERNATIONAL EXISTING BUILDING CODE (IEBC)
 LEVEL 2 ALTERATION – RENOVATIONS
 2009 INTERNATIONAL FIRE CODE (IFC)
 2009 INTERNATIONAL ENERGY CONSERVATION CODE (IECC)
 2012 INTERNATIONAL BUILDING CODE (IBC),
 CHAPTER 11 – ACCESSIBILITY
 REFERENCED STANDARD: 2009 ICC/ANSI 117.1

PROJECT DESCRIPTION:

EXISTING TOTAL LIBRARY FLOOR AREA:	±15,144 S.F.
USE:	"A-3" ASSEMBLY (LIBRARY)
CONSTRUCTION TYPE:	2B, NON-COMBUSTIBLE, UNPROTECTED
SPRINKLER SYSTEM:	EXISTING NON-SPRINKLERED BLDG.
OCCUPANCY:	OFFICE & STACKS AREA: 132 PERSONS (1 PER 100 GROSS S.F.) READING AREA: 40 OCCUPANTS (1 PER 50 NET S.F.) 172 OCCUPANTS TOTAL
HEIGHT:	EXISTING 1-STORY BUILDING
IECC CLIMATE ZONE:	4
IECC REQUIREMENTS:	MAX. STOREFRONT U-FACTOR = 0.50 MAX. ENTRANCE DOOR U-FACTOR = 0.85

ISSUED FOR BID – NOT FOR CONSTRUCTION

PROPOSED EXTERIOR STOREFRONT REPLACEMENTS FOR:
BUCKS COUNTY FREE LIBRARY
 BENSALEM BRANCH – 3700 HULMEVILLE ROAD
 BENSALEM, BENSALEM TOWNSHIP, BUCKS COUNTY, PENNSYLVANIA 19020

RHJ ASSOCIATES, P.C.
 ARCHITECTS • PLANNERS • DESIGNERS
 860 1ST AVE, SUITE 9A
 KING OF PRUSSIA, PA 19406
 610 337 4555
 www.rhjassoc.com

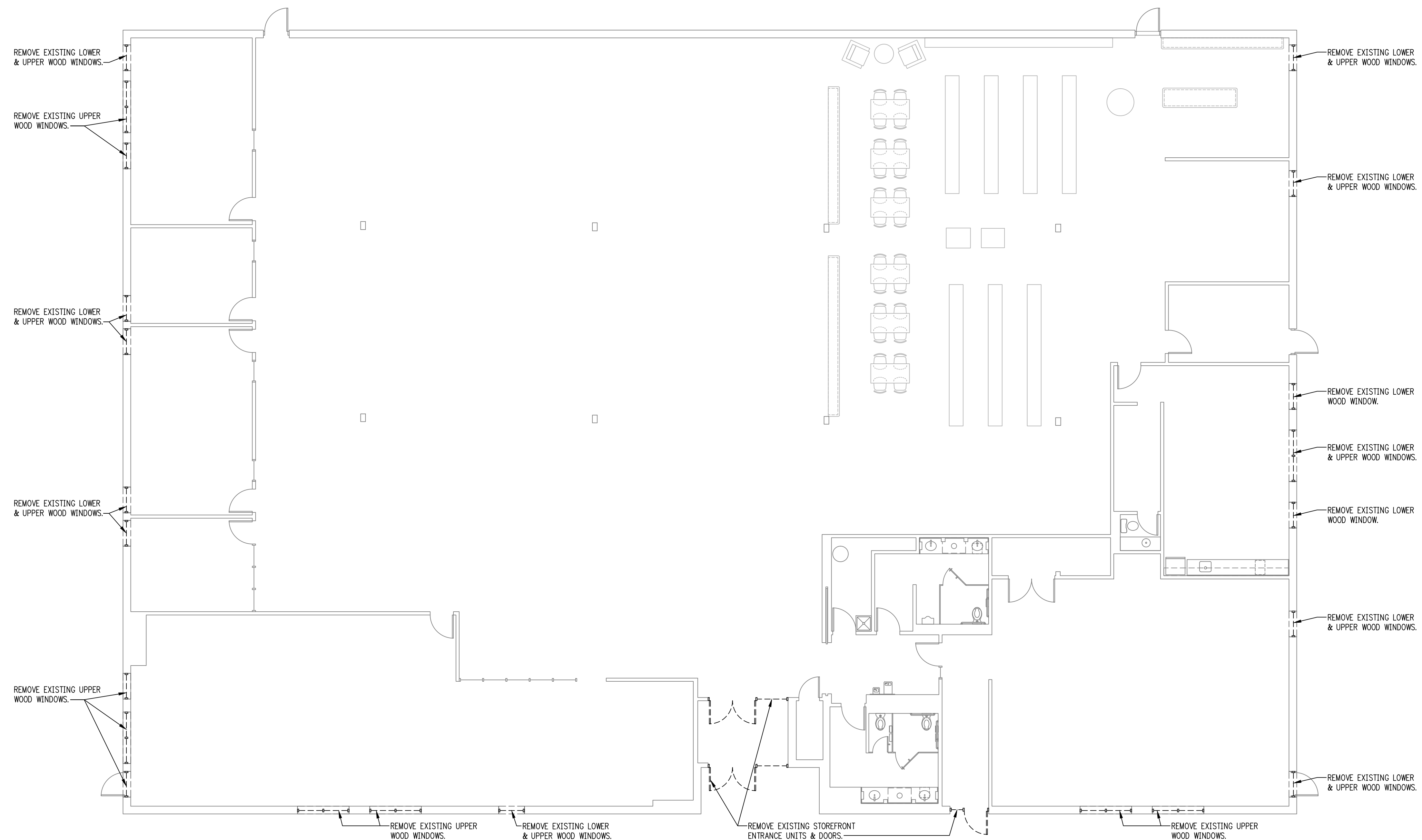
ISSUED FOR BID DATE: 11.18.2015

REVISIONS

A.0
 2015-0261

Y:\BCL\ Bensalem_Window Replacement_2015-0261\Drawings\Issued For Bid_11182015\BCL Bensalem - Cover.dwg

Y:\BDFL Bensalem_Window Replacement_2015-0261\Drawings\Issued for Bid_11182015\BDFL Bensalem - Glaz Replacement.dwg



1 WINDOW DEMOLITION LOCATION PLAN

SCALE: 1/8" = 1'-0"

PROPOSED EXTERIOR STOREFRONT REPLACEMENTS FOR:
BUCKS COUNTY FREE LIBRARY
 BENSLEM BRANCH - 3700 HULMEVILLE ROAD
 BENSLEM, BENSLEM TOWNSHIP, BUCKS COUNTY, PENNSYLVANIA 19020

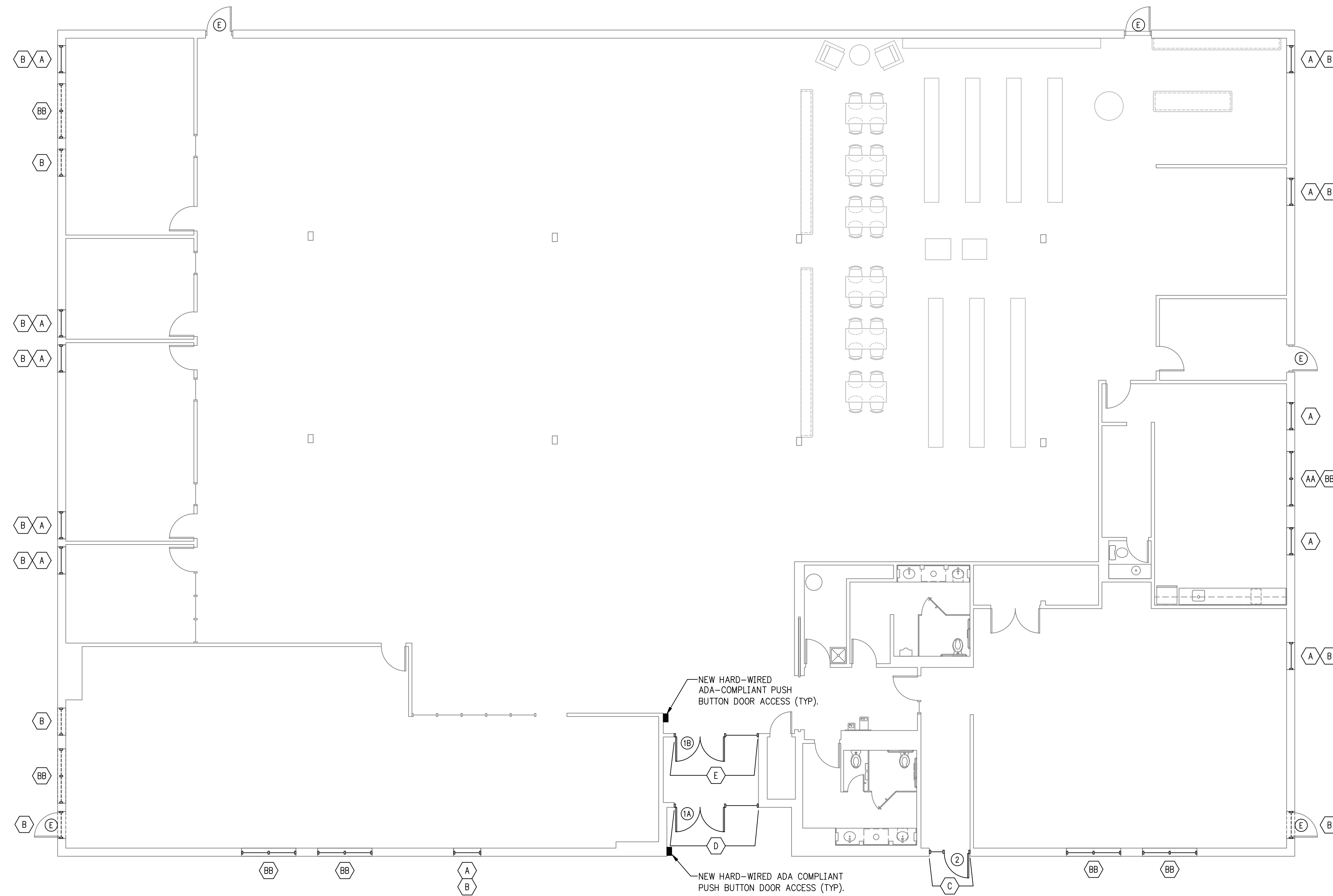
RHJ ASSOCIATES, P.C.
 ARCHITECTS • PLANNERS • DESIGNERS
 860 1ST AVE, SUITE 9A
 KING OF PRUSSIA, PA 19406
 610 337 4555
 www.rhjassoc.com

ISSUED FOR BID
 DATE: 11.18.2015

REVISIONS	

AD.1
 2015-0261

Y:\BDFL Bensalem_Window Replacement_2015-0261\Drawings\Issued for Bid_11182015\BDFL Bensalem - Glaz Replacement.dwg



PLAN SYMBOL LEGEND:

①	NEW DOOR I.D. - SEE DOOR SCHEDULE.
⬡	NEW WINDOW I.D. - SEE WINDOW SCHEDULE.

SCALE: 1/8" = 1'-0"

1 WINDOW LOCATION PLAN

PROPOSED EXTERIOR STOREFRONT REPLACEMENTS FOR:
BUCKS COUNTY FREE LIBRARY
 BENSLEM BRANCH - 3700 HULMEVILLE ROAD
 BENSLEM, BENSLEM TOWNSHIP, BUCKS COUNTY, PENNSYLVANIA 19020

RHJ ASSOCIATES, P.C.
 ARCHITECTS • PLANNERS • DESIGNERS
 860 1ST AVE, SUITE 9A
 KING OF PRUSSIA, PA 19406
 610 337 4555
 www.rhjassoc.com

ISSUED FOR BID
 DATE: 11.18.2015

REVISIONS	

A.1

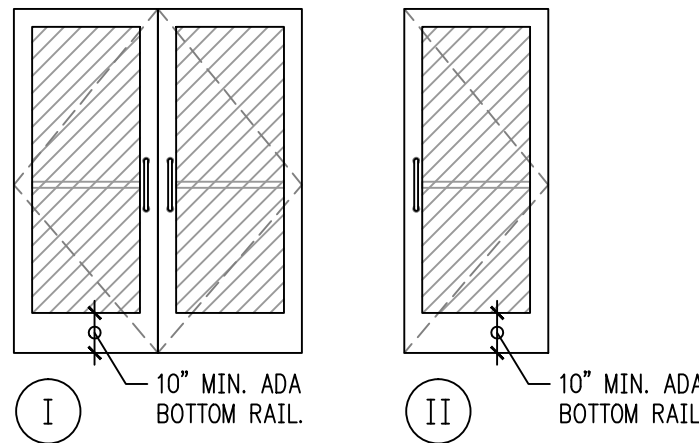
2015-0261

DOOR SCHEDULE

NO.	SIZE	LOC.	DOOR		FRAME		HARDWARE	LOUVER SIZE	REMARKS
			MTRL. CORE	FINISH TYPE	MTRL. FINISH	TYPE			
EXISTING DOOR, FRAME, AND HARDWARE TO REMAIN									
E									RE-PAINT ALL EXISTING HOLLOW-METAL EXIT DOORS AND FRAMES.
1A	2-3 ⁰ x 7 ² x 1 ³ / ₄	ENTRANCE	ALUM. GLAZ.	BLACK ANODIZED	I	(SEE WINDOW SCHEDULE)	1A		KAWNEER ALUMINUM DOOR
1B	2-3 ⁰ x 7 ² x 1 ³ / ₄	VESTIBULE	ALUM. GLAZ.	BLACK ANODIZED	I	(SEE WINDOW SCHEDULE)	1B		KAWNEER ALUMINUM DOOR
2	3 ⁰ x 7 ² x 1 ³ / ₄	EXIT	ALUM. GLAZ.	BLACK ANODIZED	II	(SEE WINDOW SCHEDULE)	2		KAWNEER ALUMINUM DOOR

NEW DOOR TYPES

DOOR HARDWARE SETS



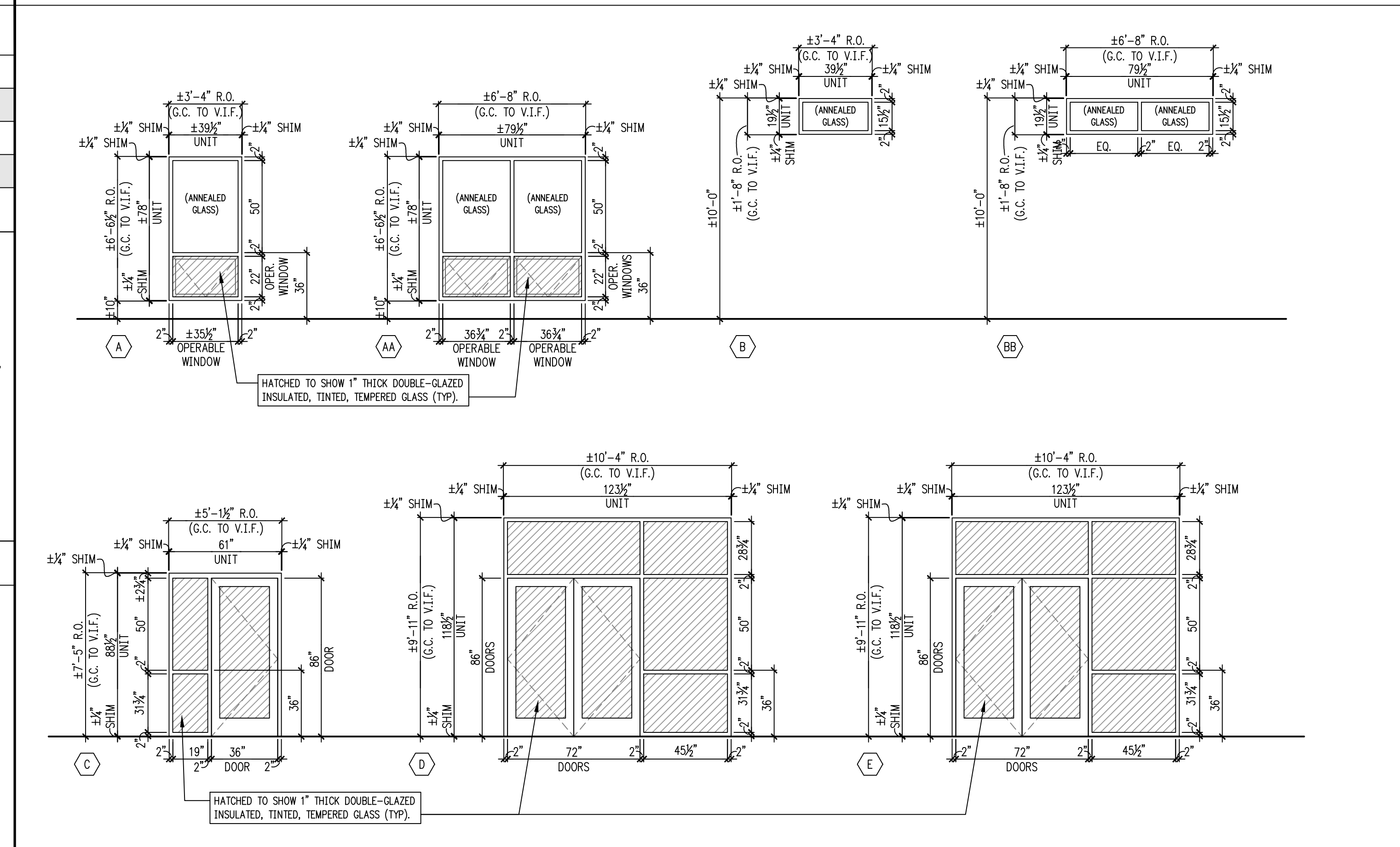
- SET #1A (ENTRANCE DOORS):**
- 2 CONTINUOUS HINGES (ROTON)
 - 2 PULL-HANDLES (EXTERIOR-GRADE)
 - 2 PANIC DEVICES W/ CONCEALED VERTICAL RODS
 - ADA-COMPLIANT, WALL-MOUNTED, EXTERIOR PUSH BUTTON (ENTER BLDG. - TIED TO BOTH SETS OF VESTIBULE DOORS)
 - 1 ELECTROMECHANICAL SWING DOOR OPERATOR - VESTIBULE ENTRY SYSTEM
 - 1 UPS
 - 1 CONCEALED OVERHEAD CLOSER
 - 2 DOOR SWEEPS
 - 1 WEATHERSTRIPPING PACKAGE
 - 1 ADA-COMPLIANT THRESHOLD
 - 1 KICK-DOWN HOLD OPEN
- SET #1B (VESTIBULE DOORS):**
- 2 CONTINUOUS HINGES (ROTON)
 - 2 PULL-HANDLES
 - 2 PUSH BARS
 - 1 CYLINDER KEYED LOCK (W/ INTERIOR THUMBTURN)
 - 1 ADA-COMPLIANT, WALL-MOUNTED, INTERIOR PUSH BUTTON (EXIT BLDG. - TIED TO BOTH SETS OF VESTIBULE DOORS)
 - 1 ELECTROMECHANICAL SWING DOOR OPERATOR - VESTIBULE ENTRY SYSTEM
 - 1 UPS
 - 1 CONCEALED OVERHEAD CLOSER
 - 2 SILENCERS
 - 1 KICK-DOWN HOLD OPEN
- SET #2:**
- 1 CONTINUOUS ROTON HINGE
 - 1 PANIC DEVICE W/ CONCEALED VERTICAL ROD
 - 1 CYLINDER KEYED LOCK - EXTERIOR (PANIC DEVICE INTEGRATED)
 - 1 PULL-HANDLE (EXTERIOR-GRADE)
 - 1 CONCEALED OVERHEAD CLOSER
 - 1 WEATHERSTRIPPING PACKAGE
 - 1 DOOR SWEEP
 - 1 ADA-COMPLIANT THRESHOLD
 - 1 KICK-DOWN HOLD OPEN

- STOREFRONT DOOR SPECIFICATIONS:**
- MFR: KAWNEER
 MATERIAL: ALUMINUM
 TYPE: STANDARD 500 SERIES
 FINISH: BLACK ANODIZED
 U-FACTOR: 0.85 MAX.
- HARDWARE NOTES:**
1. SEE "HARDWARE SPECIFICATIONS" BELOW FOR ALL DOOR HARDWARE SPECIFICATIONS & FINISHES.

DOOR HARDWARE SPECIFICATIONS

- ADA REMOTE DOOR OPERATOR:**
- MANUFACTURER: STANLEY
 MODEL: MAGIC ACCESS OPERATOR
 TYPE: SURFACE-MOUNTED, DUAL OPERATORS ON PAIR DOORS
 OPTIONS: INCLUDE PUSH BUTTON CONTROLS, POWER CLOSE MODULE, CONTINUOUS HEADER, ALL WIRING, & ALL CONNECTIONS.
 MOUNTING HT: MOUNT TOP OF PUSH BUTTON AT 48" A.F.F. MAX.
- DOOR PULLS:**
- MANUFACTURER: ASSA ABLOY ROCKWOOD
 MODEL: 10" CTC DOOR PULL
 MODEL NO: 108
 MATERIAL: ALUMINUM
 FINISH: 315, BLACK ANODIZED
- DOOR SWEEPS:**
- MANUFACTURER: HAGER
 MODEL NO.: 801S
 MATERIAL: ALUMINUM
 FINISH: BLACK ANODIZED
- DOOR HOLD-OPEN, KICK DOWN:**
- MANUFACTURER: ASSA ABLOY ROCKWOOD
 MODEL: KICK DOWN DOOR STOP
 MODEL NO: 461
 MATERIAL: SOLID CAST BRASS
 FINISH: US26D, SATIN CHROME
- ELECTRIC POWER TRANSFER:**
- MANUFACTURER: VON DUPRIN
 MODEL #: EPT-10
- HINGES, CONTINUOUS:**
- MANUFACTURER: ASSA ABLOY PEMKO
 MODEL: K_FM_HD
 MATERIAL: ALUMINUM
 FINISH: BLACK ANODIZED
- PANIC DEVICES:**
- MANUFACTURER: VON DUPRIN
 MODEL: 9899 SERIES
 LEVER STYLE: #06 LEVER DESIGN
 FINISH: US26D, SATIN CHROME
 OPTIONS: (@ DOOR #2 ONLY - KEYED CYLINDER LOCK "M" FULL SIZE INTERCHANGEABLE CORE)
- PUSH BARS:**
- MANUFACTURER: ASSA ABLOY ROCKWOOD
 MODEL: 1" DIA PUSH BAR
 MODEL NO: 47
 MATERIAL: ALUMINUM
 FINISH: 315, BLACK ANODIZED
- SILENCERS:**
- MANUFACTURER: ASSA ABLOY ROCKWOOD
 PRODUCT: DOOR SILENCER
 MODEL #: 608
 MATERIAL: DUREFLEX GRAY RUBBER
- THRESHOLDS:**
- MANUFACTURER: HAGER
 SERIES: 403S
 MATERIAL: ALUMINUM
 FINISH: CLEAR
- UPS:**
- MANUFACTURER: VON DUPRIN
 MODEL: PS 873
 OPTIONS: BATTERY, KEYLOCK
 NOTE: INCLUDE FIRE ALARM AND SECURITY FUNCTIONS AS REQUIRED
- WEATHERSTRIPPING:**
- MANUFACTURER: HAGER
 MODEL NO.: #803S
 MATERIAL: ALUMINUM
 FINISH: BLACK ANODIZED

WINDOW SCHEDULE



WINDOW SPECIFICATIONS

- STOREFRONT SYSTEMS:**
- MFR: KAWNEER
 MODEL: VERSAGLAZE 451t
 PANE TYPE: FRONT-PANED
 FINISH: PERMADONIC ANODIZED
 COLOR: BLACK
 MULLION: 2" TH. (TYP)
- STOREFRONT GLAZING:**
- MFR: PPG
 TYPE: 1" INSULATED, TEMPERED
 TINT %: 65%
 TINT COLOR: GRAY
 U-FACTOR: 0.50 MAX.
 NOTES: SEE SPECIFICATIONS
- STOREFRONT OPERABLE WINDOW UNITS:**
- MFR: KAWNEER
 MODEL: GLASSvent UT
 MODEL #: AW-PG90-C
 FINISH: PERMADONIC ANODIZED
 COLOR: BLACK
 OPERATION: HOPPER
 DEPTH: 4³/₈"
 HARDWARE: BLACK ANODIZED
 OPTIONAL: INSECT SCREEN @ EACH LOC.

PROPOSED EXTERIOR STOREFRONT REPLACEMENTS FOR:
BUCKS COUNTY FREE LIBRARY
 BENSALAM BRANCH - 3700 HULMEVILLE ROAD
 BENSALAM, BENSALAM TOWNSHIP, BUCKS COUNTY, PENNSYLVANIA 19020

RHJ ASSOCIATES, P.C.
 ARCHITECTS • PLANNERS • DESIGNERS
 860 1ST AVE, SUITE 9A
 KING OF PRUSSIA, PA 19406
 610 337 4555
 www.rhjassoc.com

ISSUED FOR BID DATE: 11.18.2015

REVISIONS	

A.2

2015-0261

Y:\BDFL Bensalem_Window Replacement_2015-0261\Drawings\Issued For Bid_11182015\BDFL Bensalem - Glaz Replacement.dwg